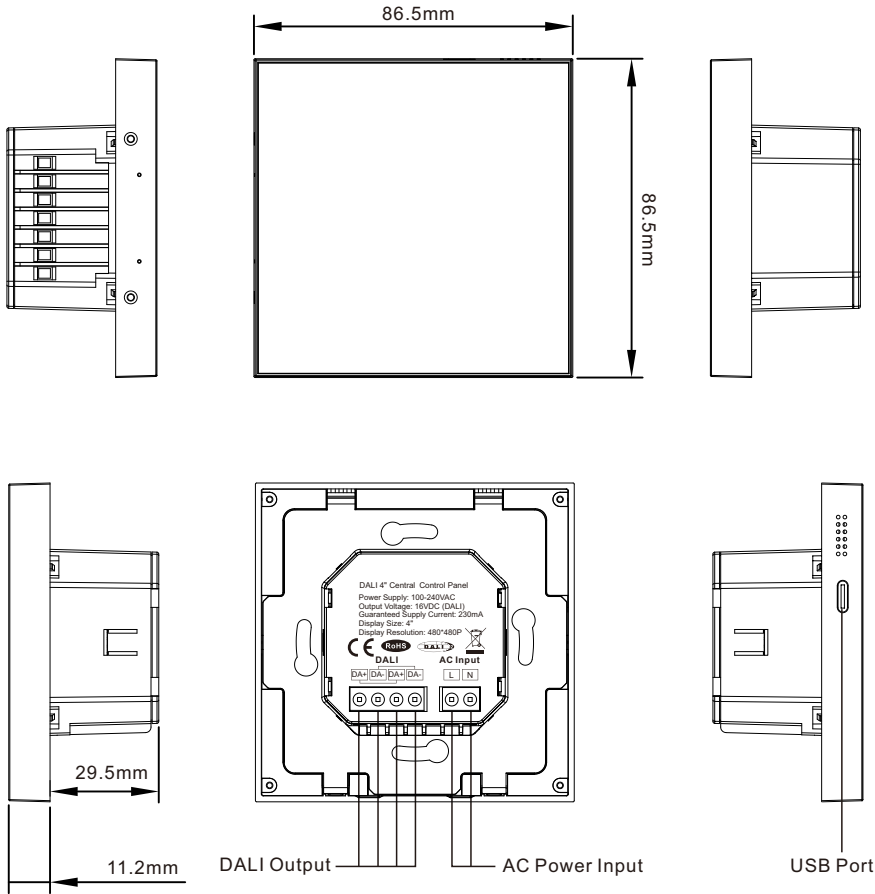


DALI Master Controller with 4" LCD Monitor



Important: Read All Instructions Prior to Installation

Product Introduction



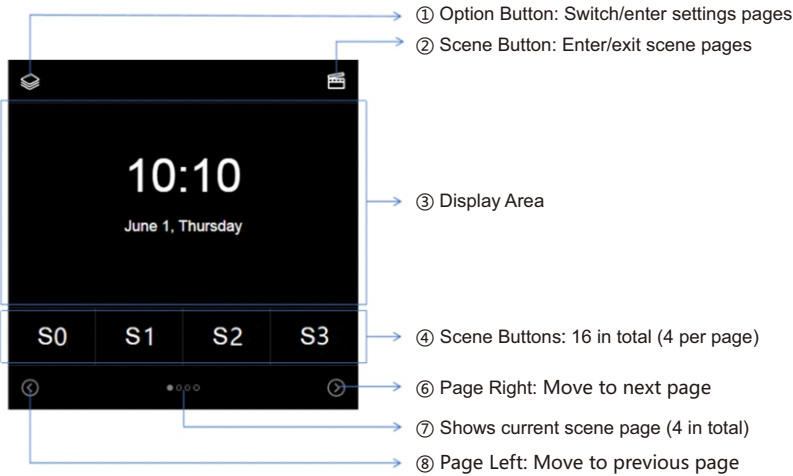
Product Data

Input Voltage	Guaranteed Supply Current	Output Voltage	Size (L x W x H)	Display Resolution
100-240VAC	230mA	16VDC (DALI)	86.5x86.5x40.7mm	480x480P

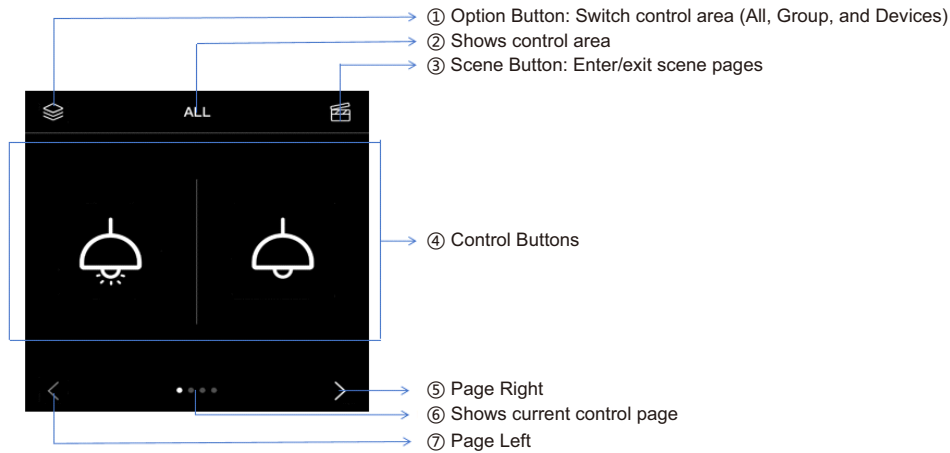
Product Features

- DALI master controller with 4" LCD monitor
- Auto-assign & manage addresses for up to 64 control gears
- Supports 5 device types (Dim, CCT, XY, RGBWA, SW)
- Supports up to 16 scenes & 16 groups
- Supports up to 16 timer tasks, with each timer task able to:
 - a. Trigger scenes for all, groups, or single control gear
 - b. Start/stop human centric lighting (HCL) tasks for all, groups, or single CCT-type control gear over a 24-hour cycle
- Supports up to 4 HCL tasks: 24-point brightness & color temp curve
- Adjustable settings: button sound, tone, RTC, etc.
- Equipped with PC software for parameter setup and device management

Screen Saver

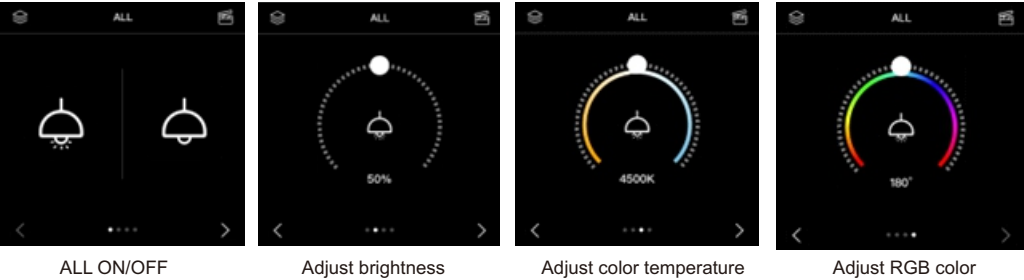


Control Page






Device Control

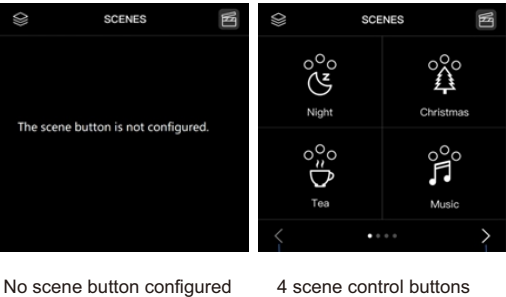
Tap lamp icon  to turn on/off all devices.
Touch the color wheel to adjust brightness/color temperature/RGB color of all dimmable/CCT/RGB devices.




Note: The pages vary based on the types of devices in the area. This example uses the “ALL” area for illustration.

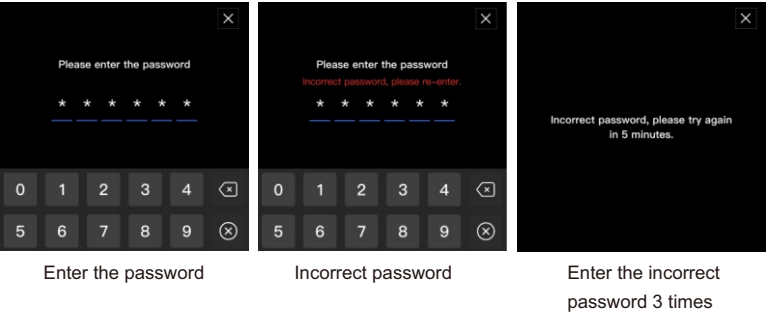
Scene Control

Tap scene button  to enter scene control page, tap scene button  or option button  to exit. Tap on **Scene Control Button icon** to recall the scene.

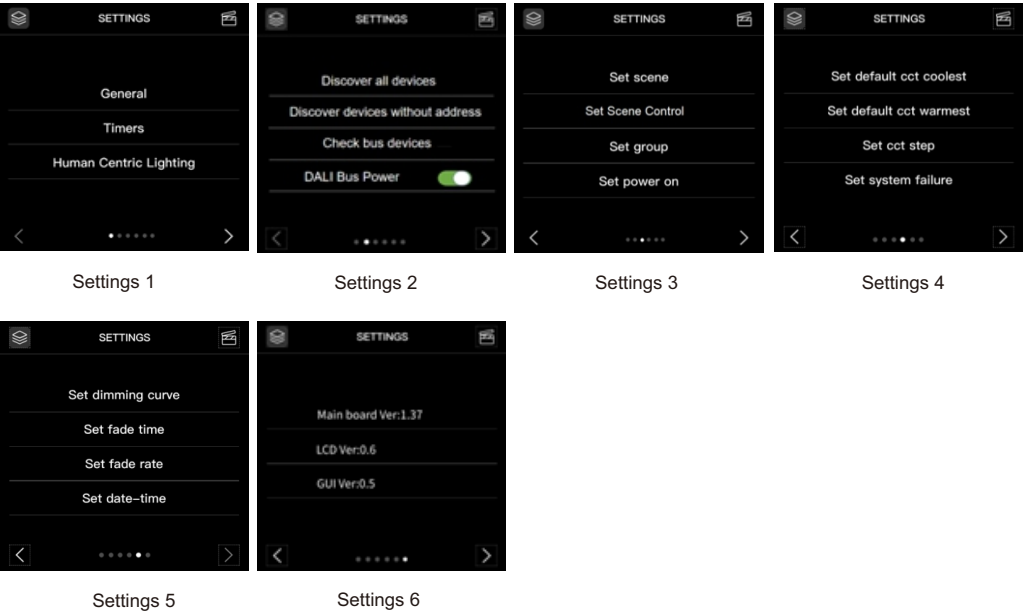


System Settings

Enter system settings: In non-screen saver page, hold the Option button  for 1s to enter the login page, and fill in the 6-digit password (default 123456) to enter the settings page.



After entering settings, there are 18 configurable items & 1 firmware version page (as shown in **Settings 1-6**).

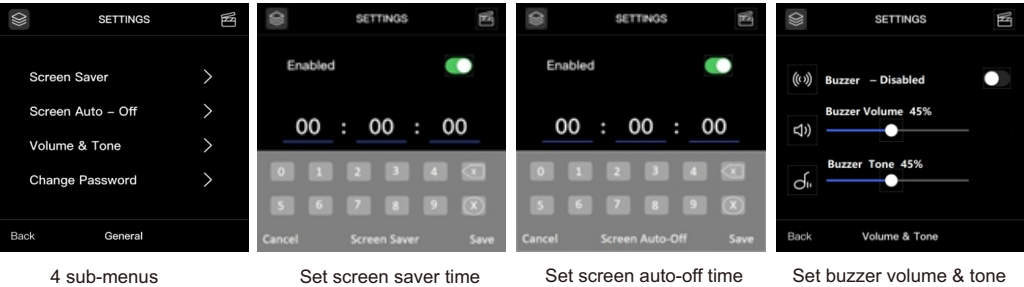


Configure Device Address

There are three options as shown in **Settings 2**:
Discover all devices: Finds all devices on the DALI bus and reassigns their addresses.
Discover devices without address: Finds unaddressed devices on the DALI bus and assigns them addresses.
Check bus devices: Finds unaddressed devices on the DALI bus and assigns them addresses.
Note:
If new devices are added, or if short addresses of existing devices or control gears on the DALI bus are changed, perform a device search or extended address assignment using the LCD Panel, Gateway, or PC software. This allows the master to retrieve the latest parameter information for those devices, ensuring accurate configuration, control, and status queries.

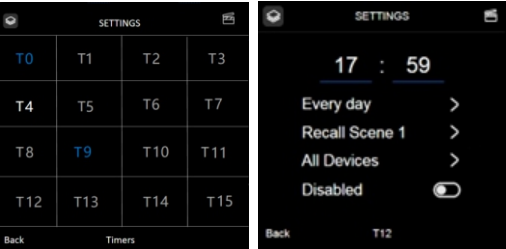
Settings - General

Tap on **General** to enter 4 sub-menus:
Screen Saver: When enabled, panel will enter screen saver page after the set time of no touch input.
Screen Auto-Off: When enabled, LCD screen will turn off automatically after the set time of no touch input.
Volume & Tone: When enabled, the buzzer will sound according to the set volume and tone when the screen is pressed.
Change Password: Set your own password. **You can reset the password to the factory default value "123456" using the PC software “DALI Master”.** Download the software from the link: <https://www.sunricher.com/downloads>



Settings-Timers

Tap on **Timers** to enter 16 configurable schedules. You can set a one-time timer for a specific date or a recurring timer for selected days of the week.



16 timers Set timer parameters

Settings-Human Centric Lighting

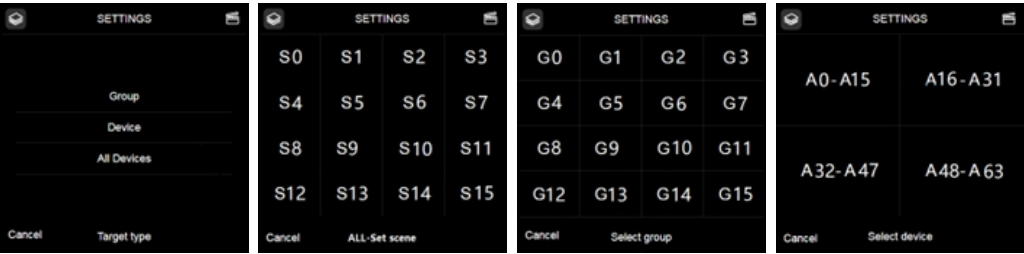
Tap on **Human Centric Lighting** to enter 4 configurable HCL tasks. When an HCL task is set and enabled, CCT lighting devices in the related control area will run according to the set brightness and color temperature values.



4 configurable HCL tasks Set HCL parameters

Settings - Set Scene

Tap on **Set Scene** to enter 3 sub-menus: **Group**, **Device**, **All Devices**. You can configure up to 16 scenes for groups, selected devices, or all devices.



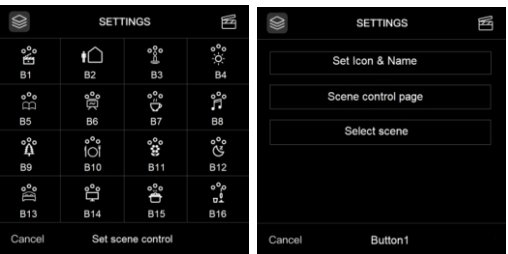
3 sub-menus When **All Devices** selected When **Group** selected When **Device** selected



Set parameter values

Settings - Set Scene Control

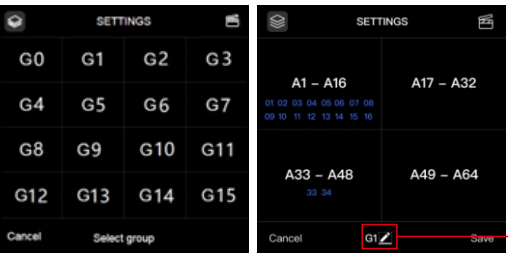
Tap on **Set Scene Control** to enter 16 scene control buttons.



16 scene control buttons Set scene control button

Settings - Set Group

Tap on **Set Group** to enter 16 configurable groups.



16 groups Add device address to group

Other Settings

- DALI bus power:** Turn the DALI bus power on or off.
- Set power on:** Set the power-on state.
- Set default cct coolest:** Set the coolest color temperature for CCT devices.
- Set default cct warmest:** Set the warmest color temperature for CCT devices.
- Set cct step:** Set the step size (0-100) for color temperature adjustment.
- Set system failure:** Set the system failure state.
- Set dimming curve:** Select between logarithmic and linear dimming.
- Set fade time:** Adjust from 0.0 to 90.5 seconds.
- Set fade rate:** Adjust from 0.0 to 358.0 steps per second.
- Set date-time:** Set the panel's real-time system clock.

Wiring

